

General Information

WOOTSON MORGAN & ASSOCIATES



About WMA

Wootson Morgan & Associates (WMA) is an event consulting firm located 30 minutes outside of Atlanta in Union City, GA.

We work with individuals, businesses, non-profits and municipalities to help them plan, facilitate or execute their events.

WMA is the event consultation firm that will help make a molehill out of task that could be mountainous. Tell us what you have in mind for your next event then

Consider It Done.

Levels of Service:

Some people are event savvy and just need someone to point them in the right direction.

Others have grand ideas but are clueless as to how to pull them off. That's why WMA offers varying levels of event consulting assistance. Which one is right for you?

Information

The WMA informational services provide clients with advice on how to execute the event they envision.

Organization

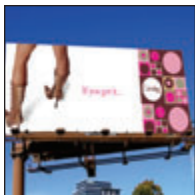
With this service, we'll help you eliminate one of the most tedious parts of event planning: tracking down potential vendors that fit your budget.

Facilitation

Sit back, relax and take all the credit for a wonderful event. That's all you'll have to do if you opt to have WMA facilitate your next event. We'll shop for the right vendors—from event venue to promotional material verbiage—plus we'll be there the day of the event to coordinate services 'til the last guest is gone.

WMA Areas of Expertise:

Marketing & Promotion



What are your communications and promotional materials saying about your business or event? Let WMA help you look and communicate with your audience in a professional manner.

Entertainment



What kind of entertainment would make your event more memorable? Let us know and we'll do the booking.

Real World Education



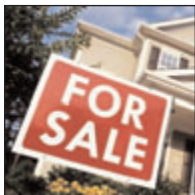
Learning doesn't stop when the school bell rings. Kids and adults alike can benefit from a little extracurricular education. So if you have an idea on a lesson that needs to be taught, let us know. We might just have access to the experts you're looking for.

TV & Theatrical Production



Making any production, be it live or filmed, go off without a hitch can be a complex task but with a little help from WMA, the process can be a whole lot smoother. We have access to key crew members like directors, editors, gaffers, set designers, and more.

Professional Services



The expert assistance you need for a healthy, wealthy and safe life is right here. We've partnered with a number of professionals that can give you the advice you're looking for and the solid professional service you need. Associate experts include: Lawyers, Realtors, Financial Advisors (Investments), Mortgage Consultants, Nutritionists / Fitness Experts, & Debt Counselors

Special Events / Event Staffing



No two events are exactly alike and we love a challenge. That's why we're open to helping you plan special events—from corporate events and fashion shows to theatrical productions and adventure Excursions (adults & youths)—or simply supplying the contacts for the crew you'll need for your special event.

About WMA Associates

Our associates represent our company. That's not something we take lightly. As such, we require that prospective service providers demonstrate what they can bring to our company and the clients we service. Each associate is screened to ensure clients receive the very best service possible. Only after we have reviewed references, proof of licensing (if applicable), work samples, etc. and assessed customer service capabilities and professionalism do we accept companies as associates.

Interested in being a WMA Associate?

We partner with companies whose products and services fit within one of our six areas of expertise. If what you do aligns with our areas of concentration, please continue learning about the WMA Associate Program. To do so, log on to www.Wootson-Morgan.com to download the WMA Associates brochure.



www.Wootson-Morgan.com
wootson.morgan@gmail.com
404.552.4251